

Peninsula Glass Guild

The Peninsula Glass Guild
18th Annual Juried Exhibition
Armstrong & Chapman Galleries
&

James Clark
New Directions

The Charles H. Taylor Arts Center
4205 Victoria Boulevard
Hampton, Virginia
757-727-1490

December 2, 2005
January 15, 2006



James Clark
Heather

Awards



**Best In Show
2005**

Ali Rogan
body of work



2nd Place
Matthew Fine
Response in Blue



3rd Place
Neil Duman
Vase



Emilio Santini
**Hampton Arts Com-
mission Award**
Black Sphere

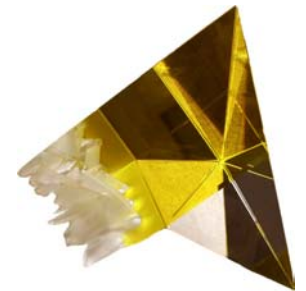
Additional Awards

Mary Johnson
Judy Doyle
Martin Tate
Matt Childrey
Jerry Flanary
Heather Hartle
Jude Schlotzhauer

Founders Award
Award of Excellence
Award of Excellence
Award of Merit
Award of Merit
Award of Merit
Award of Merit



Martin Tate
Self Caricature



Judy Doyle
Valhalla

Member Artists Exhibiting

Joy Brooks
Matt Childrey
Stuart Clayman
Katherine Douglas
Judy Doyle
Neil Duman
Matthew Fine
Jerry Flanary
Anna Garzon
Heather Hartle
Mary Johnson

Lisa Mosser
Richard Nelson
Ali Rogan
W. Brad Pearson
Donna Poland
Emilio Santini
Jude Schlotzhauer
Martin Tate
Susan Welteroth
Lee Gerry Wertheimer
Dale Williams

James Clark

"I seek to attract the eye through Quality and Detail and capture the Beauty of Life, Truth and Feelings through the visual form. And, to help the viewer to look beyond its typical utilitarian uses and realize the capabilities and beauty of the medium itself."



Jocelyne Prince

Acting Glass
Department Head at
Rhode Island School
of Design, Prince

received her MFA from the Rhode Island School of Design '94 and her BFA from the Nova Scotia College of Art and Design '85. She has been awarded grants from the Canada Council, the Quebec Ministry of Cultural Affairs and others, and has received the award of excellence from RISD. She shows her work in Museums and alternative galleries across the US and Canada.

Juror's Statement

"Art has no biological source. It is addressed to a taste."

- Marcel Duchamp

Duchamp's statement reflects a certain level of reality for all jurors and artists; that we are all limited, affected, or in some cases driven, by ideas of taste. Despite this limitation I have sought to go beyond these pre-judgments, I also held my selections of awarded work to the same standard. As a juror for the Peninsula Glass Guild show I looked for work with innovation and a successful materialization. In both the work of Ali Rogan and Emilio Santini I found a good combination of skill

and risk taking. These works went beyond a simple desire to master or control material; they sought to discover new possibilities with glass. The Founders Award is typically given to stained glass but I decided to open this category up to larger amount of work that I categorized as 2 dimensional. I also changed the number of awards of excellence to give proper recognition for artists who are looking to master skill. Glass is a difficult and tenacious material that can be technically overwhelming and I hope this award encourages these artists to surpass conventions and constraints of technique and truly invent something of their own.

Thanks

To the following companies and individuals who made donations for awards.

Cristallo Artisans
Artful Touch (Martin Tate)
Emilio Santini
Perceptions in Studio Glass
M&M Glass Works
Hampton Arts Commission

Special Thanks to:

**The Hampton
Arts Commission**
Michael Curry
James Warwick Jones
Erin Kemplin-Tischbein
Debbie Maida
Carole Anne McErlean

The Guild

The non-profit Peninsula Glass Guild was established in 1986 to promote quality art glass in the community and to provide a forum for glass artists to gather together for educational and support purposes. Membership includes both professional and non-professional glass artists.

PGG offers workshops for members to encourage continual growth. Discounts at various retail glass business, trips to see glass and related arts, meetings featuring guest lecturers, and the Annual Glass Show are but a few of the membership benefits.

Each year, the Guild creates a large piece of glass and donates it to a public organization. This piece is funded by the Guild and donations, group designed, constructed, and installed by the Guild. Pieces are now displayed at the Newport News SPCA, the Virginia Living Museum, the Charles H. Taylor Arts Center, the Yorktown Victory Center, the Virginia Air and Space Center in Hampton, Shelton on the Bay in Phoebus, the Newport News Main Street Library, the Virginia Holocaust Museum in Richmond, and the Norfolk Botanical Garden. The Guild co-purchased a significant piece of glass for the Chrysler Museum in 1998.

Visit our website for additional information and photos from this and previous shows.

www.peninsulaglassguild.org