

Peninsula Glass Guild

The Peninsula Glass Guild
17th Annual Juried Exhibition
Armstrong & Chapman Galleries
&

Jude Schlotzhauer
Soul Vessels and Spirit Keepers

The Charles H. Taylor Arts Center
4205 Victoria Boulevard
Hampton, Virginia
757-727-1490

December 3, 2004
January 16, 2005



Soul Vessel with Bones
Jude Schlotzhauer

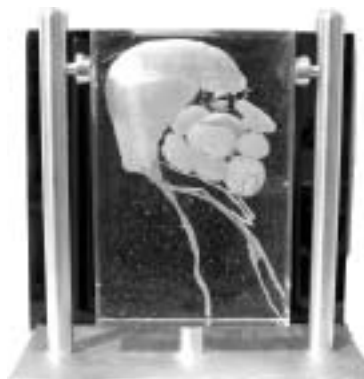
Awards

Best in Show

James Clark
Rasnie Dpeh
Sastne Vessel



2nd Place
Matthew Fine
Parable



3rd Place
Ali Rogan
Howard

Additional Awards

Patti Gibbs
Jerry Flanary

Martin Tate

Heather Hartle
Caroline Gatten
Rick Nelson &
Ali Rogan
(collaboration)
Mary Johnson
Ron Rogers

Founders' Award
Hampton Arts
Commission Award
Hampton Arts
Commission Award
Award of Excellence
Award of Excellence
Award of Excellence

Award of Merit
Award of Merit

Member Artists Exhibiting

Courtney Black
James R. Clark
Stuart Clayman
Judy Doyle
Neil Duman
Matthew Fine
Jerry Flanary
Caroline Gatten
P.M. Gibbs
Heather Hartle
Mary Johnson
Reiko Murako
Richard Nelson
Laurie Nelson
Corban Nuber
Brad Pearson

Alice Rogan-Nelson
Ron Rogers
Stephanie Saunders
Fred Scarlott
Jude Schlotzhauer
Eric Schneider
Rick Schneider
Nikki Vahle
Martin Tate
B.J. Wallace
Susan Welteroth
Lee Jerry Wertheimer
Ashleigh Wilkinson
Dale Williams
Irma Zaneccchia

Jude Schlotzhauer

The common scene I addressed in my artwork is the journey of the human spirit with all its questions, mysteries and timeless connections to cultures past and present. The boat, as a vessel equipped with what a soul needs for its journey into the unknown, touches the memory in the collective unconscious. Faces as masks have served as a powerful form in cultures throughout time. These spirit keepers each represent a different aspect of human existence, it's need for answers, organization and continuity. These are life masks made from molds of the faces of the people I encounter. The boats are created through the lost wax and kiln casting process. The masks are sand cast, embedded with metal objects, sometimes weathered and old, some as obvious references to the tools and sacred objects of our culture. I create my work as an artist/archeologist exploring the mysteries of life, hoping to stir the imagination of viewers as fellow explorers.



Elizabeth Moss



This year's juror, Elizabeth Moss, is assistant director of the Artisan's Center of Virginia in Waynesboro and has dedicated her career to advancing the economic and professional development of Virginia's creative community. With an M.A. in Arts Administration from Golden State U. in San Francisco, she is in charge of gallery operations, jurying, and exhibition and educational programs. An ideal choice for juror.

Thanks

To the following companies and individuals who made donations for awards.

**Cristallo Art & Glass Studio
Glass Gallery, Michael Huffman
Perceptions etc. (Judy Doyle)
M & M Glass Works
Hampton Arts Commission**

Special Thanks to:

***The Hampton
Arts Commission***

**Michael Curry, Director
Nicole Benson**

For additional information about the Peninsula Glass Guild, ask any member, pick up an application at the Charles H. Taylor Arts Center, or check the website at www.peninsulaglassguild.org

About The Guild

The non-profit Peninsula Glass Guild was established in 1986 to promote quality art glass in the community and to provide a forum for glass artists to gather together for educational and support purposes. Membership includes both professional and non-professional glass artists.

PGG offers workshops for members to encourage continual growth. Discounts at various retail glass business, trips to see glass and related arts, meetings featuring guest lecturers, and the Annual Glass Show are but a few of the membership benefits.

Each year, the Guild creates a large piece of glass and donates it to a public organization. This piece is funded by the Guild and donations, group designed, constructed, and installed by the Guild. Pieces are now displayed at the Newport News SPCA, the Virginia Living Museum, the Charles H. Taylor Arts Center, the Yorktown Victory Center, the Virginia Air and Space Center in Hampton, Shelton on the Bay in Phoebus, the Newport News Main Street Library, the Virginia Holocaust Museum in Richmond, and the American Theatre in Phoebus. The guild co-purchased a significant piece of glass for the Chrysler Museum in 1998.

Visit our website for additional information and photos from this and previous shows.

www.peninsulaglassguild.org